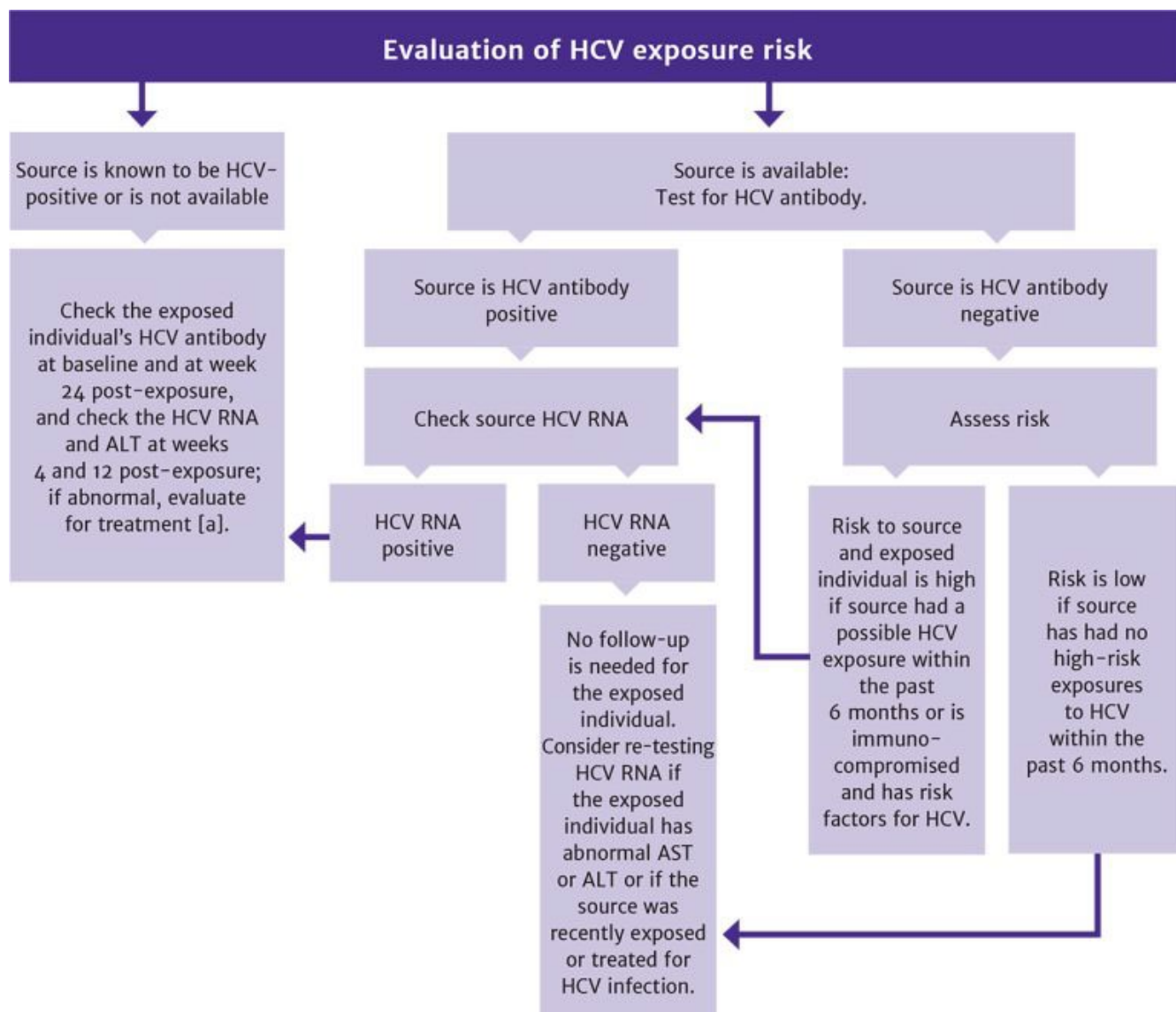


Figure 5: Evaluation of HCV Exposure Risk and Recommended Follow-Up



**Abbreviations:** ALT, alanine aminotransferase; AST, aspartate aminotransferase; HCV, hepatitis C virus.

**Note:**

- a. If at any time the serum ALT level is elevated, repeat HCV RNA testing to evaluate for acute HCV infection. If HCV infection is identified, refer to a clinician with experience in treating HCV for medical management (see NYSDOH AI guideline [Treatment of Chronic Hepatitis C Virus Infection in Adults](#)).