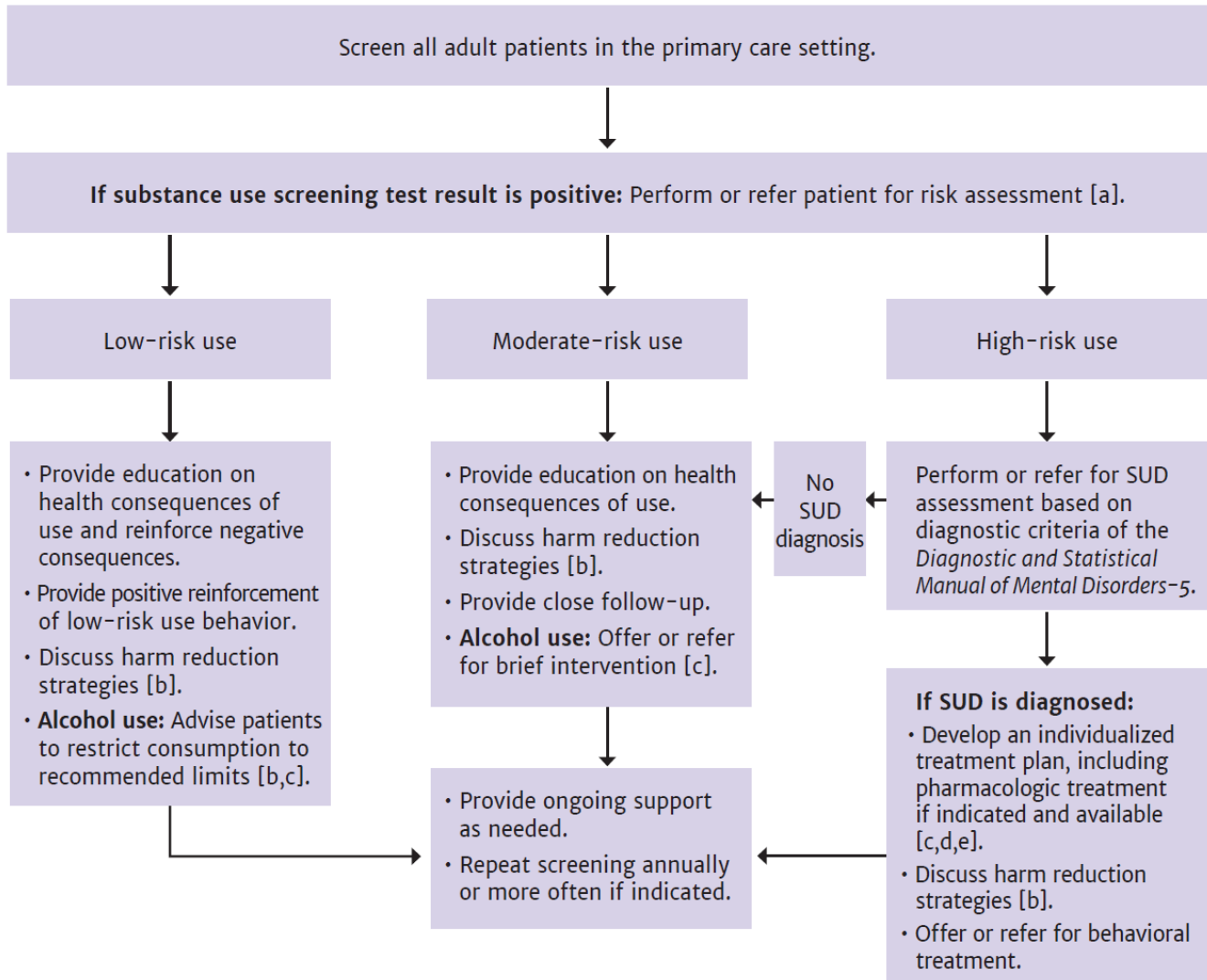




Substance Use Screening and Risk Assessment in Adults

October 2020

Figure 1: Substance Use Identification and Risk Assessment in Primary Care



Notes:

- For patients with a known history of SUD or overdose, screening may not be required by assessment is recommended.
- See NYSDOH AI guideline [Substance Use Harm Reduction in Medical Care](#).
- See NYSDOH AI guideline [Treatment of Alcohol Use Disorder](#) and National Institute on Alcohol Abuse and Alcoholism: [Helping Patients Who Drink Too Much: A Clinician's Guide](#).
- See NYSDOH AI guideline [Treatment of Opioid Use Disorder](#).
- See U.S. Public Health Service: [A Clinical Practice Guideline for Treating Tobacco Use and Dependence](#).